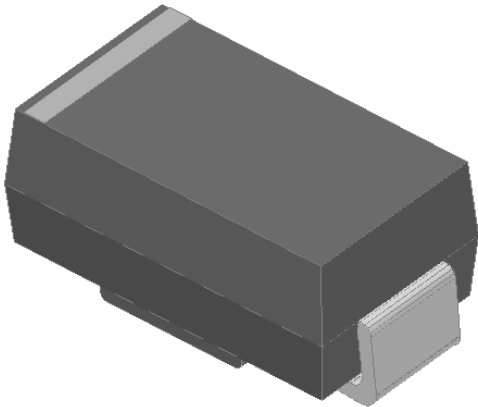


Surface Mount Fast Recovery Rectifier



Features

- Low profile package
- Ideal for automated placement
- Glass passivated chip junction
- High forward surge capability
- Fast reverse recovery time
- Meets MSL level 1, per J-STD-020, LF maximum peak of 260 °C

Typical Applications

For use in fast switching rectification of power supplies, inverters, converters, and freewheeling diodes for consumer, and telecommunication.

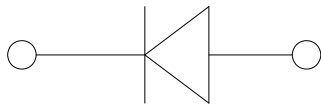
Mechanical Data

Package: DO-214AC (SMA)

Molding compound meets UL 94 V-0 flammability rating, RoHS-compliant, halogen-free

Terminals: Tin plated leads, solderable per J-STD-002 and JESD22-B102

Polarity: Cathode line denotes the cathode end



Maximum Ratings (T_a=25 Unless otherwise specified)

PARAMETER	SYMBOL	UNIT	GR1A	GR1B	GR1D	GR1G	GR1J	GR1K	GR1M
Device marking code	O	A	GR1A	GR1B	GR1D	GR1G	GR1J	GR1K	GR1M

Forward Surge Current (Non-repetitive) @60Hz Half-sine wave, 1 cycle, T _j =25	I _{FSM}	A	30						
Forward Surge Current (Non-repetitive) @1ms, square wave, 1 cycle, T _j =25			60						
Current squared time @1ms t 8.3ms T _j =25	I ² t	A ² s	3.735						
Storage temperature	T _{stg}		-55 ~ +150						
Junction temperature	T _j		-55 ~ +150						

Electrical Characteristics T_a=25 Unless otherwise specified

PARAMETER	SYMBOL	UNIT	TEST CONDITIONS	GR1A	GR1B	GR1D	GR1G	GR1J	GR1K	GR1M
Maximum instantaneous forward voltage	V _F	V	I _F =1.0A	1.3						
Maximum reverse recovery time	t _r	ns	I _F =0.5A, I _R =1.0A, I _r =0.25A	150				250	500	
Maximum DC reverse current at rated DC blocking voltage	I _R	μA	T _j =25	5						
			T _j =125	100						
Typical junction capacitance	C _j	pF	Measured at 1MHz and Applied Reverse Voltage of 4.0 V.D.C	13				8	7	



GR1A THRU GR1M

Thermal Characteristics $T_a=25$ Unless otherwise specified

PARAMETER	SYMBOL	UNIT	GR1A	GR1B	GR1D	GR1G	GR1J	GR1K	GR1M
Typical Thermal Resistance	$R_{J-A}^{(1)}$	/W	75						
	$R_{J-L}^{(1)}$		22						
	$R_{J-C}^{(1)}$		20						

Note

(1) Thermal resistance from junction to ambient and from junction to lead mounted on P.C.B. with 0.2" x 0.2" (5.0 mm x 5.0 mm) copper pad areas

Characteristics (Typical)

FIG.1: Io-TL Curve

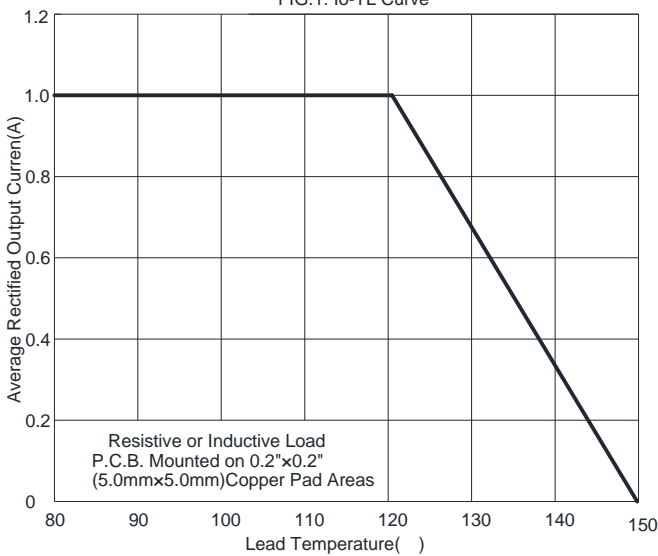


FIG2: Surge Forward Current Capability

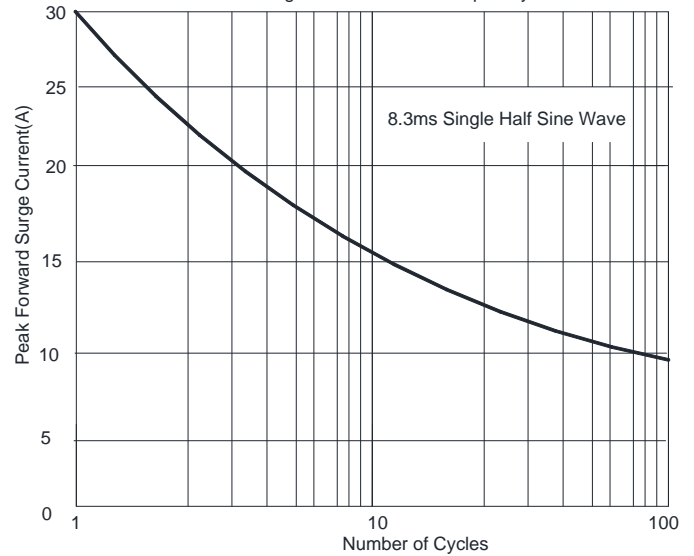


FIG3 Typical Forward Voltage

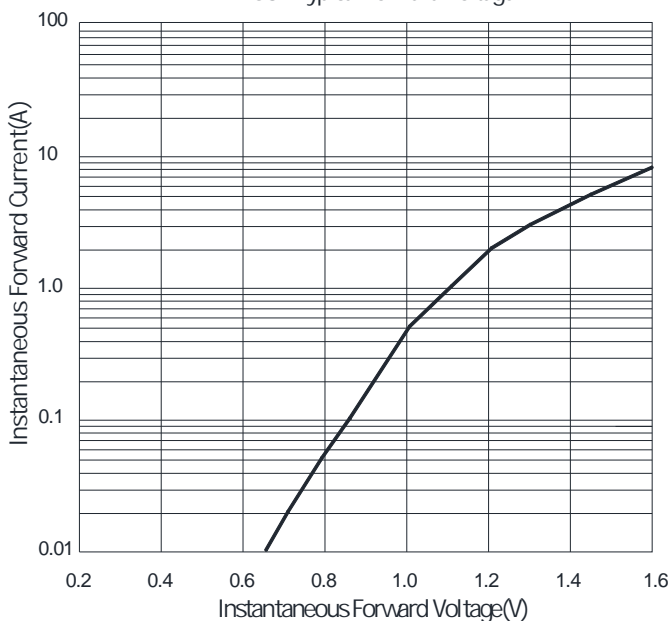
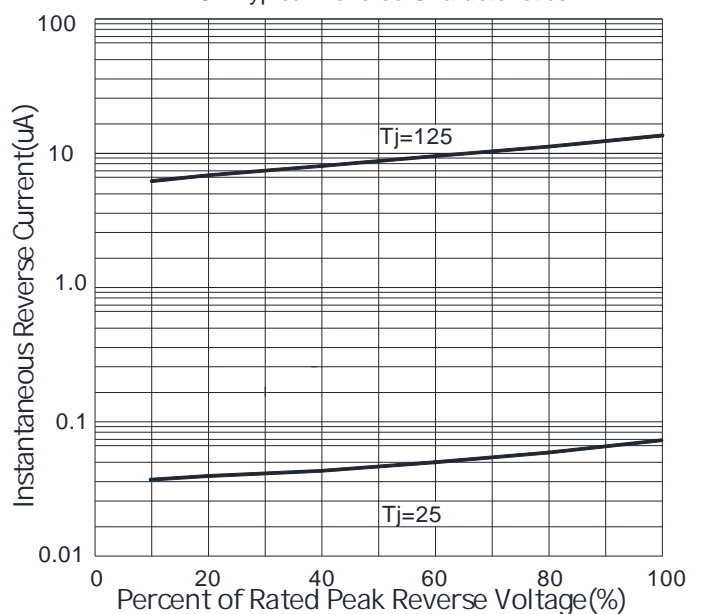


FIG4: Typical Reverse Characteristics





GR1A THRU GR1M

Suggested Pad Layout

DO-214AC(SMA)	
Dim	Millimeters
P1	4.00
P2	1.50
P3	6.50
Q1	2.50
Q2	1.70



GR1A THRU GR1M`

Disclaimer

The information presented in this document is for reference only. Yangzhou Yangjie Electronic Technology Co., Ltd. reserves the right to make changes without notice for the specification of the products displayed herein to improve reliability, function or design or otherwise.

The product listed herein is designed to be used with ordinary electronic equipment or devices, and not designed to be used with equipment or devices which require high level of reliability and the malfunction of which would directly endanger human life (such as medical instruments, transportation equipment, aerospace machinery, nuclear-reactor controllers, fuel controllers and other safety devices), Yangjie or anyone on its behalf, assumes no responsibility or liability for any damages resulting from such improper use of sale.

This publication supersedes & replaces all information previously supplied. For additional information, please visit our website [http:// www.21yangjie.com](http://www.21yangjie.com) , or consult your nearest Yangjie's sales office for further assistance.